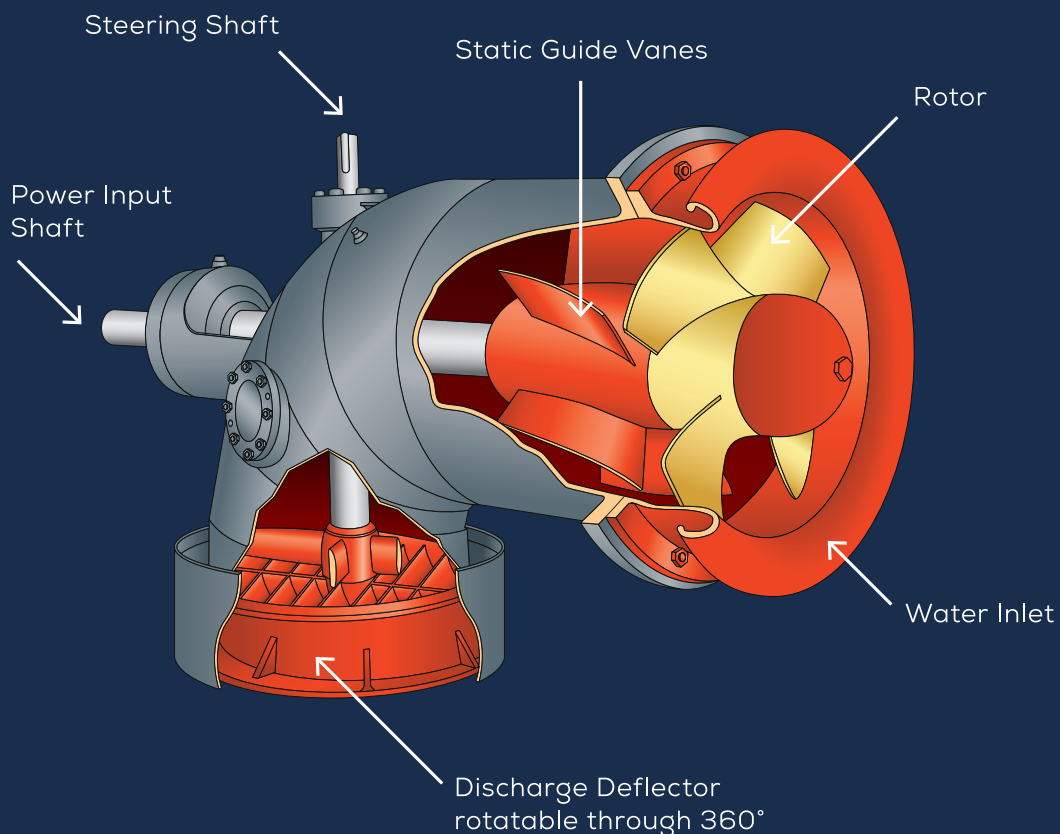


CS CROSS SHAFT THRUSTER



Our Tees White Gill cross shaft thruster (CS) has a static thrust from 1003kgs to 6974kgs, and as our most compact design, is an excellent choice for retrofit applications, or those with limited spaces – such as canal or river barges.

The name 'cross shaft' reflects its design feature – the vertical steering shaft is sited on the same end as the horizontally mounted rotor shaft, with both shafts crossing one another.

MV WOODS HOLE



Courtesy of Steam Ship Authority. www.steamshipauthority.com

CS CROSS SHAFT UNIT



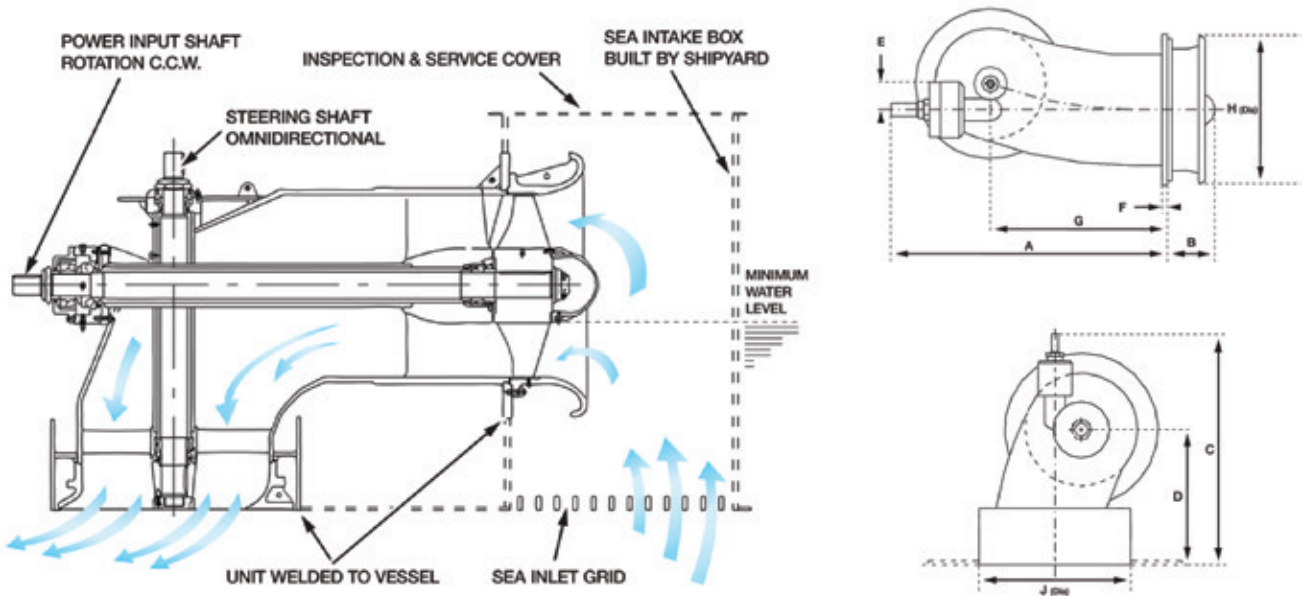
Performance figures stated in the tables are at maximum rating. Thrust figures are effective horizontal thrusts. Selection should be made using our performance curves, for optimum efficiency and service requirements.

Dimensions should not be used for installation purposes without confirmation.

Tables indicate maximum speed, but the r/min can be reduced to match driver speed. The power absorbed by the unit is proportional to the r/min^3 .

The static thrust obtained from the unit is proportional to the r/min^2 . All rotations given are looking on end of power input shaft.

Operating circumstances and ship design may require alterations or adaptations of the basic design illustrated. Do not hesitate to contact Tees White Gill Thrusters when distinctive conditions, special materials or unique situations are encountered.



BOW / STERN CROSS SHAFT THRUSTER

Model	r/min	kW (absorbed)	Static Thrust (kg)	Dimensions (millimeters)									Free intake area m ²	Approx. weight (kg)
				A	B	C	D	E	F	G	H	J		
20	1,200	116	1,003	1,357	215	950	600	117	25	910	680	675	0.41	851
24	1,000	165	1,461	1,665	288	1,160	720	140	30	1,090	825	810	0.58	1,350
32	750	290	2,681	2,145	383	1,560	960	190	40	1,455	1,110	1,080	1.04	2,463
40	600	448	4,310	2,650	480	1,925	1,200	240	50	1,820	1,450	1,350	1.62	4,800
50	480	691	6,974	3,315	600	2,400	1,500	300	65	2,275	1,820	1,670	2.53	9,400

AVAILABLE COUNTER CLOCKWISE ROTATION ONLY.

Tees White Gill Thrusters, North Skelton, Saltburn-by-the-Sea, Cleveland, TS12 2AP, United Kingdom
A division of Tees Components Limited.
Tel: +44 (0) 1287 652 642 | Email: sales@teesgillthrusters.com | www.teesgillthrusters.com

